

# Waterloo Parents & Carers Network

Putting parents at the heart of Waterloo

## What to do in Waterloo

Summer 2007

### Waterloo Parents & Carers Network

Welcome to our very first parent-initiated newsletter!

We are all very sorry that Julie Reynolds has had to leave her post as outreach worker when funding expired. Her intention to create links between families and the community has been so successful that we have decided as parents and carers to continue aspects of the project that she has established - including this newsletter.

We will miss the full-time commitment, enthusiasm and ingenuity that Julie brought to the role, but these qualities have inspired us to work together to build upon her legacy.

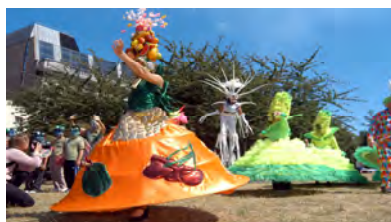
Although we all have other commitments in our busy lives as parents, we hope that by meeting, regularly, we can see this as an opportunity to work as a community.

The aim of the Network is to encourage and enable greater parental involvement in the neighbourhood and develop a sense of unity among parents; to share information, improve communication and provide a communications network for parents and carers.

I hope that you will join us at network meetings, to meet and contribute ideas. If the meetings are impractical to join, please keep in contact via our website and email. We hope that as many interested people who are able, can attend - so please let us know of more suitable times for meetings, and we will try and vary the time to accommodate members needs.

Colette West  
Chair

[www.wcdg.org.uk/project\\_parents.htm](http://www.wcdg.org.uk/project_parents.htm)



### Waterloo Carnival

Friday 13<sup>th</sup> July

This year the **Waterloo Carnival on Friday 13th July** has a **Sea** theme and it will be bigger and better than ever before.

The Procession starts at 1:30 - 2pm along Lower Marsh ending at Waterloo Millennium Green. The Carnival continues until 6pm.

We are looking for parents to take part in a range of activities and be part of the carnival.

Don't miss out on this joyful celebration of life in Waterloo, music, dance, colour and lots and lots of good old fun and laughter.

#### Activities:

**Baby buggy decorating** Wed 9th July

**Face Painting** workshops Tues 10th July

**Community Dance** Classes 3.30pm, Wed 11th July

All at Johanna Primary School

Please contact Julie Reynolds on 07960 065 970

If you want to be in full carnival costume, please contact Rose Sharp 020 7202 6900 x244

### Waterloo Parents & Carers Network

Friday 20th July 4-6pm

Johanna Primary School

All are welcome

and refreshments will be available

020 7633 9291 or [waterlooparents@hotmail.com](mailto:waterlooparents@hotmail.com)

## Editorial

Hello everyone,

The summer brings opportunities for a variety of outdoor activities for the children—but some parents can find the summer holidays rather long, with regular term-time activities closing before August.

In this newsletter you'll find information about many activities in the area in July—but some of these will be taking a holiday during August.

If you know of other local activities or events throughout the summer, please tell us about them, and we will publish them on our website at [www.wcdg.org.uk/project\\_parents](http://www.wcdg.org.uk/project_parents)

**Colette West**

*Waterloo Parents Network Chair*

## Poetry Sacks and Yummy Snacks

As part of the opening weekend for the Southbank Centre a large group of children from Waterloo opened the Spirit Zone in the Royal Festival Hall.

The children have all been part of "Poetry Explorers" the Poetry Libraries after school club and had been working on a project to produce Story Sacks for the new Poetry Library.

The children made objects around a theme like "the Sea" and these objects were taken away and made into hard wearing products by a designer. Each Story Sack can be taken away by children using the Poetry Library to help them understand and explore poetry.

Everyone was delighted to see what had been made and joined in a fantastic story to launch the Spirit Zone which is a new learning space at the Royal Festival Hall. Afterwards, families were given badges, treats and refreshments in the backstage area then ran off to stand in the fountain.

**Poetry Explorers first session in the new Poetry Library is on the 4<sup>th</sup> July at 4pm.**

## Mini Glastonbury for local Toddlers

By Bridget Virden

The Community Garden at Tate Modern was opened after three years of planning and planting by Tate, the local community in SE1 and Bankside Open Spaces Trust.

Parents and children from Borough, Bankside and Waterloo who had been involved were treated to a mini garden fete outside Tate Modern with stalls offering vegetable sculpting, a mini beast zoo and mask and bunting making. Rounded off with a stroll round the garden in the midsummer sunshine and a slice of cake covered in plants and flowers this really was a mini fete to remember.

If you would like to get involved in gardening and live close to Tate Modern call 020 7401 5176 to become a Friend of the Garden or local volunteer



## Baby & You Group Volunteers Wanted

Volunteers are needed to help run **Baby & You Group** at Buffer Bear Neighbourhood Nursery.

We need volunteers who can give us **3 hours one Wednesday in every month** to help with maintaining the **Baby & You drop-in**.

If you're interested helping provide **support and information** in a friendly setting contact:

**020 7633 9291**



## Recipe corner

By Lise Guenda

### Warm Potato Salad

Serve 4 people

#### INGREDIENTS

- 1 1/2 Kg salad potato
- 1 clove of garlic, crushed
- 1 big handful of parsley, chopped
- 1 small cup of olive oil
- a pinch of salt

#### METHOD

Boil potatoes until cooked then peel skin off, (optional). Cut into bite-size pieces.

Mix olive oil, garlic, salt and parsley.

When dressing is ready pour over the warm potatoes and mix gently.

Serve immediately.

Goes well with fish or meat and a nice green salad.



### Sandwich filling, Tuna Salad

#### INGREDIENTS

- 1 tin of tuna
- 2 spoon-full mayonnaise
- 2 spoon-full red onion, finely chopped
- 2 spoon-full yellow pepper, finely chopped
- 2 spoon-full cucumber, finely chopped
- Black pepper, optional

#### METHOD

Drain liquid from tuna.

Put all ingredients in a bowl and mix well.

Then it is up to the individual to choose their favourite bread, bun or roll. Enjoy.

## Living Space/ Play Space

Ten years ago WCDG began a regeneration project to create Millennium Green, the Adventure Playground, and Living Space.

The Living Space building was opened in 2002 by Lambeth Council as a community learning centre and social enterprise. It now provides a broad range of youth and community services including ESOL and literacy classes, and activities for children and young people run by SE1 United and Blackfriars Settlement. It also operates commercial services including an internet café, and hosts conferences.

Now Lambeth is considering making it a 'Community Interest Company' completely independent of the Council. What does this mean, and how would we like to see Living Space develop? Come and have your say!

**WCDG is your local planning group, scrutinising planning applications and making suggestions and/or objections on your behalf.**

WCDG hold a public meeting every 6 weeks where we share information on what is taking place and invite developers and other experts to give presentations and answer questions.

As well as Living Space there will be a presentation of proposals to build 3 huge twisting blocks on York Rd. Developers P&O will show the pictures and answer your difficult questions! It will be interesting to participate in a discussion on the impact of the proposed changes.

Friendly inclusive atmosphere, light buffet, wine and general chat at 6pm.

**A crèche (with arts & crafts for the kids) will be available from 4–6 pm if you let us know in advance that you need it.**

***Next WCDG Public Meeting  
Wednesday 11th July 2007  
Waterloo Action Centre 4–6pm***

## July Events and Meetings

- Sun 1st **COLOMBIANAMENTE 1-7PM** Bernie Spain Gardens  
Musicians, actors, circus performers, dancers, marching bands, visual arts and photographers bring the colour and exuberance of Colombia to the South Bank.
- Wed 4th **LAMBETH PARENTS FORUM 5-9pm** The focus for this meeting is to launch the new parents website and share information with other parents and Professionals.  
The Redfearn Center, 329 Kennington Lane, SE11 5QY. Contact Denise Downie-Campbell 07932 046 897 (Children are welcome)
- Thurs 5th **BUTTERFLIES 3.30-5pm** Join in for the great hunt! Make a life-cycle wheel and butterfly crown for yourself. Spaces are limited so please call Agnes on 020 74033393. Please bring a parent or carer. Red Cross Gardens, 50 Red Cross Way SE1.
- SAT 7th **FAMILY WORKSHOPS AT SOMERSET HOUSE 'Drawn from the Past'** Discover past drawing techniques using quill and ink, chalks and charcoal.
- PLANT A POEM WITH MALIKA BOOKER 11am** Plant a poem as part of the Sheds, Beds and Breads installation in Southbank Square. Poet and performer Milika Booker reads her garden poems, and leads a poetry writing workshop before leading everyone out to plant flower seeds and mark them with their specially crafted poem. Suitable for seven and over. Contact Southbank Centre.
- Sun 8th **SING SOUTHBANK 4pm** Sign London is a new festival designed to get the whole of London singing. Join thousands of singers from London communities for the Sing London Finale. From popular song, to gospel, to songs about London.
- Wed 11th **WCDG MEETING 4-6pm** All welcome, a general chat about our community and what's happening around us. Refreshments are served at 6pm. Creche available

- Thurs 12th **MUSIC** Make a rain-stick and grow some radishes and spring onions to take home. At the Diversity Garden, Liberty St, SE1. Spaces are limited so please call Agnes on 020 74033393. First come first serve basis. To join please bring parent/carer.
- Fri 13th **WATERLOO CARNIVAL** See front page for full details!
- SOUTHWARK SLASH LIVE 5.30pm** Celebrating the talents of Southwark schoolchildren, the emphasis on rhythm and movement, with drumming and dance from around the globe. Southbank Centre.
- Sat 14th **SOMERSET HOUSE DIORAMA DRAMA** Viewed through a peephole-make a miniature scene, complete with backdrops and figures, changing seasons or times of days. Imagination is the only limit.
- 14th / Sun 15th **TURKISH FEST 12noon- 7pm** A taste of Turkish on the Southbank, with top Turkish music, food, drink and a Turkish bazaar.
- Wed 18th **COME & SEE 4.30pm-7pm** Come and find out more about the Community Garden and how you can become a free 'Friend of the garden', at Tate Modern, for more details contact 020 7401 5176.
- Sat 21st **INDIAN SUMMER** Using textiles and monoprints inspired by beautiful micromosaic patterns and other precious objects from the Gilbert collection, help us transform our learning centre into a tiny slice of India. Somerset House.
- Thurs 26th/ Sun 29th **SOMERSET HOUSE FREE TIME** Celebrate the wonderful outdoor space and fabulous dancing fountains. Somerset House is on The Strand at the other end of Waterloo Bridge, with the largest open courtyard in London—with free access!

**August Events** These will be updated on our website page  
[www.wcdg.org.uk/project\\_parents.htm](http://www.wcdg.org.uk/project_parents.htm)

**Enjoy your summer !!**

## What's on in Waterloo

|                   |  |  |
|-------------------|--|--|
| <b>Every Week</b> | Breakfast Club<br>7:30—<br>school start<br><b>£3.50</b><br>per session | All Weekdays term-time<br>Age 4-11's<br>Coin Street Family & Children's Centre (CSFCC) 99a Upper Ground, Southbank, London SE1 9PP<br><b>Guy Hanscombe 020 7593 1567</b>                                   |
|                   | Day Nursery<br><br>Fees Payable  | All Weekdays<br>18months—5 years<br><b>Coin Street Family and Children's Centre—See above</b>  |
|                   | Parent and<br>Toddler Play<br>10am—12pm                                | All Weekdays.<br>Open Access Adventure Playground,<br><b>The Play Space, Coral St, SE1 0207926 8440</b>  |
|                   | One O'Clock<br>Club<br>12:30—4pm<br><b>FREE</b>                        | All Weekdays<br>Indoor/Outdoor Play drop in.<br>Geraldine Harmsworth Park (next to Imperial War Museum)<br><b>Sheila or Deonne 020 7820 9724</b>   |
| <b>Mondays</b>    | Family Links<br>'Ozone'<br>4:30-5:30pm<br><b>FREE</b>                  | Term Time Only—4pm<br>IT & Art Club 4-11 year olds + parent or carer City of London Boys School. Meet at OXO tower by 'EAT' café.<br><b>Martin Hardiman 07888 87995</b>                                    |
|                   | Jazz Dance Class<br>10:30-11:30am<br><b>£2</b>                         | Get fit and learn some new moves. Women only class, babies are welcome. Free nursery places at Coin Street Nursery for toddlers over the age of 2<br><b>Colombo Centre, Colombo St, SE1, 0207 928 3022</b> |
| <b>Tuesday</b>    | 'Your Story'<br>4-5pm<br><b>FREE</b>                                   | After School Club<br><b>Contact Darren 07888 829754</b>  |
|                   | The Chipper<br>Club<br><b>FREE</b>                                     | Baby Gym—10:30am-12:00pm<br>Free Play, Arts and Crafts—1-2:30pm<br><b>The Rainbow Building, Crosby Row, SE1</b>  |
| <b>Wednesday</b>  | Parent &<br>Toddler<br>10am-12pm<br><b>£1.50</b>                       | Term Time only<br>Drop in The Play Space. Includes healthy snacks.<br><b>The Living Space, Coral St SE1.</b>   |
|                   | The Chipper<br>Club<br>10am—2:30pm<br><b>FREE</b>                      | 10:30am—12pm—Music and Movement<br>1pm—2:30pm—Free Play, Arts and Crafts<br>1-1:30pm—Stretch and Grow (age 2—5)<br><b>The Rainbow Building, Crosby Row, SE1</b>  |
|                   | Waterloo Baby<br>& You Group<br>1:30-3:30pm<br><b>FREE</b>             | Coffee, Cake, Chat and chill. Parents and carers with children 0-18 months<br><b>Buffer Bear Neighbourhood Nursery 21 Frazier St, SE1</b>  |

## What's on in Waterloo

|                             |  |  |
|-----------------------------|--|--|
| <b>Wednesday<br/>(cont)</b> | Southside Kidz<br>6:30—8pm<br><b>50p</b>                     | Term Time only<br>Activities, Table Football, Snooker, and other youth led activities or just hang with friends.<br><b>Coin Street Family &amp; Children's Centre. As before</b> |
|                             | Bangladeshi Mother & Toddler<br>12—2:30pm                    | Waterloo Action Centre 14 Baylis Road<br><b>Meena 020 7261 1651</b>  |
| <b>Thursday</b>             | Hullabaloo! Mother & Toddler<br>10:15—11:45am<br><b>FREE</b> | Imaginative Play, crafts and singing in a safe friendly space.<br>Christchurch and Upton Chapel<br>(opposite Lambeth North tube)<br><b>Becky 020 7633 2090</b>                   |
|                             | Family Learning Sessions<br>1:30—3:30pm<br><b>FREE</b>       | Pre-school support for families. Refreshments & good company<br><b>Coin Street Family and Children's Centre. As Before</b>   |
| <b>Friday</b>               | Contact a Family<br><b>FREE</b>                              | First Thursday of every month. Support for families and children with disabilities <b>Rahi, Coin St Centre 0207 593 2910</b>   |
|                             | Play and stimulation group<br>10-11:30am<br><b>FREE</b>      | New born – 2 years<br>Centenary Hall, Cottington Street, London, SE11<br><b>Lyndsey or Maria 020 7411 5679</b>   |
|                             | Child minder/parent drop in<br>10-12pm                       | An opportunity for parents to meet with child minders.<br><b>Coin street Family centre. As before</b>  |
|                             | Toddler Story<br>10:30am—12pm<br><b>FREE</b>                 | Term time only . Story time for toddlers with carers.<br><b>Waterloo Library, 114 - 118 Lower Marsh 020 7926 8750</b>  |
|                             | Your Story<br>4-5pm <b>FREE</b>                              | After School Club<br><b>Colombo Centre Darren 07888 829 754</b>  |
| <b>Saturday</b>             | Gingerbread Waterloo<br>12:30-2:30pm<br><b>FREE</b>          | Activities and Outings for lone parent families<br>Archbishop Sumner Primary School Reedworth St SE11<br><b>Arifa 020 8556 3385 Contact before attending</b>                     |
|                             | Stay & Play Club<br>2-5pm<br><b>FREE</b>                     | Saturday term Time only<br>0-7 year olds with parents and cares.<br><b>Coin St Family Centre.As before</b>   |
| <b>Sunday</b>               | Soccer Tots<br>10-12pm<br><b>£1</b>                          | 10-11am—Ages 3-5years<br>11-12pm ages 6-7 years<br><b>Hatfields Astrotrurf pitches, Colombo Centre 020 7261 1658</b>   |

## Waterloo Parents & Carers Network

### A to Z of Useful contacts

#### ALCOHOL

**Alcoholics Anonymous** 0845 7697 555  
**Drinkline** 0800 917 8282

#### BEREAVEMENT

**Child Death Helpline** 0800 282986  
**The Compassionate Friends** (0117) 953 9639  
**Cruse Bereavement Care** 0870 167 1677

#### BLACK & MINORITY ETHNIC.

**The Muslim Women's Helpline** 0800 032 7587

#### CHILDREN & YOUNG PEOPLE-

**Childline** 0800 1111  
**NSPCC Child Protection Helpline** 0808 800 5000/0800 056 0566  
**Mosac Helpline:** 0800 980 1958

#### DISABILITY

**DIAL UK** (Disability information and Advice Line) (01302) 310123  
**Contact a Family** freephone 0808 808 3555

#### DRUGS

**National Drugs Helpline** 0800 77 66 00

#### EMOTIONAL SUPPORT

**Relate** 0845 130 40 10  
**Samaritans** 08457 90 90 90/08457 90 91 92

#### FAMILY & PARENTS

**Parent line plus** 0808 800 2222  
**Gingerbread** for Lone Parents 0800 018 4318

#### HEALTH

**NHS Direct** 0845 46 47

#### HOUSING

**Shelter-line** 0808 800 4444

#### MISSING PERSONS

**Message Home** 0800 700740  
**National Missing Persons Helpline** 0500 700700  
**The Salvation Army** (020) 7367 4747

#### MONEY & DEBT

**Consumer Credit Counselling Service** 0800 138 1111  
**National Debtline** 0808 808 4000

**OLDER PEOPLE Age Concern Information Line**  
**0800 00 99 66 Elder Abuse Response** 0808 808 8141  
**Seniorline** 0808 800 6565/0800 26 96 26

#### SEXUALITY

**London Lesbian and Gay Switchboard** (020) 7837 7324  
**Sexwise** 0800 28 29 30

#### VIOLENCE & CRIME

**Refuge Domestic Violence Helpline** 0870 599 5443  
**Victim Supportline** 0845 30 30 900/(7896 3776  
**Women's Aid Domestic Violence Helpline** 08457 023 468



### Participation, Provision, Positive Change

Supported by Waterloo Community Development Group

A Company Limited by Guarantee, Registered in England & Wales,  
Registration No. 4269850, Registered Office: 14 Baylis Rd, London SE1 7AA

14 Baylis Rd, London SE1 7A  
tel 020 7633 9291  
fax 020 7401 2469  
email [waterlooparents@hotmail.com](mailto:waterlooparents@hotmail.com)